

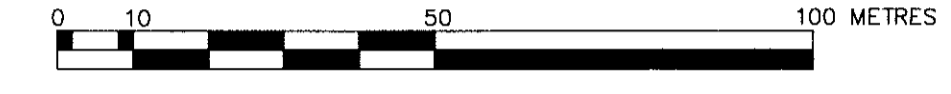
**SURVEYOR'S REAL PROPERTY REPORT**  
**PART A : PLAN.**  
**PART B : REPORT LETTER.**

THIS PLAN MUST BE READ IN CONJUNCTION WITH THE REPORT LETTER.

THIS REPORT WAS PREPARED FOR HERITAGE GROVE CENTRE INC. AND NEIL C. MILNE, O.L.S. ACCEPTS NO RESPONSIBILITY FOR USE BY OTHER PARTIES.

PLAN OF SURVEY  
 OF PART OF  
**PARK LOTS 8 and 9**  
**RANGE 5**  
**EAST OF THE GARAFRAXA ROAD**  
 GEOGRAPHIC TOWNSHIP OF SYDENHAM  
 CITY OF OWEN SOUND  
 COUNTY OF GREY

**HEWETT & MILNE LIMITED**  
 SCALE - 1 : 1000



- LEGEND**
- DENOTES SURVEY MONUMENT FOUND
  - DENOTES SURVEY MONUMENT SET
  - SIB DENOTES STANDARD IRON BAR
  - SSIB DENOTES SHORT STANDARD IRON BAR
  - IB DENOTES IRON BAR
  - WT. DENOTES WITNESS
  - H&M DENOTES HEWETT AND MILNE LTD., O.L.S.
  - P1 DENOTES PLAN 16R-10247
  - P2 DENOTES PLAN 16R-10096
  - E.G.R. DENOTES EAST OF THE GARAFRAXA ROAD

**PART B : REPORT LETTER**

The Registered Easements affecting this parcel are shown on Part A of this Report

Verifying compliance with municipal zoning bylaws and determining the existence and location of underground utility services are beyond the scope of this survey and do not form part of this Report.

Your solicitor can advise you as to the significance of the items referred to above which are illustrated on the face of this plan.

**INTEGRATION DATA**

ALL COORDINATES ARE IN METRES, ARE DERIVED FROM GPS RTK OBSERVATIONS USING THE SOKKIA CORPORATION NETWORK AND ARE REFERRED TO UTM ZONE 17 (81° WEST LONGITUDE) NAD83(CSR)(1997.0).

COORDINATE VALUES ARE TO A RURAL ACCURACY IN ACCORDANCE WITH SECTION 14(2) OF O.REG 216/10.

POINT ID	NORTHING	EASTING
A	4935466.85	507704.44
B	4935523.26	507362.98
C	4935598.10	507724.48

CAUTION: COORDINATES CANNOT, IN THEMSELVES BE USED TO RE-ESTABLISH CORNERS OR BOUNDARIES SHOWN ON THIS PLAN

**INTEGRATION NOTES**

BEARINGS ARE UNIVERSAL TRANSVERSE MERCATOR (UTM) GRID, DERIVED FROM NETWORK GPS OBSERVATIONS TRANSFERRED TO MONUMENTS 'A', 'B' AND 'C' SHOWN HEREON. THE UTM GRID BEARING BETWEEN POINTS 'A' AND 'B' IS N80°37'10"W, NAD83(CSR)(1997.0), AND IS REFERRED TO THE CENTRAL MERIDIAN OF UTM ZONE 17 (81° WEST LONGITUDE).

DISTANCES SHOWN ON THIS PLAN ARE GROUND AND CAN BE CONVERTED TO GRID BY MULTIPLYING BY THE COMBINED SCALE FACTOR OF 0.99956

BEARING COMPARISONS TO REGISTERED INSTRUMENTS AND PLANS SHOWN ON THIS PLAN ARE ASTRONOMIC BEARINGS. A CLOCKWISE ROTATION OF 359°50'45" CAN BE APPLIED TO THESE ASTRONOMIC BEARING COMPARISONS TO CONVERT TO UTM GRID BEARINGS

**SURVEYOR'S CERTIFICATE**

- I CERTIFY THAT:
- THIS SURVEY AND PLAN ARE CORRECT AND IN ACCORDANCE WITH THE SURVEYS ACT, THE SURVEYORS ACT AND THE LAND TITLES ACT AND THE REGULATIONS MADE UNDER THEM.
  - THE SURVEY WAS COMPLETED ON THE 22nd DAY OF FEBRUARY 2016.

MARCH 4th 2016

*Neil C. Milne*  
 NEIL C. MILNE,  
 ONTARIO LAND SURVEYOR

© No person may copy, reproduce, distribute or alter this PLAN in whole or in part without the written permission of HEWETT AND MILNE LIMITED.

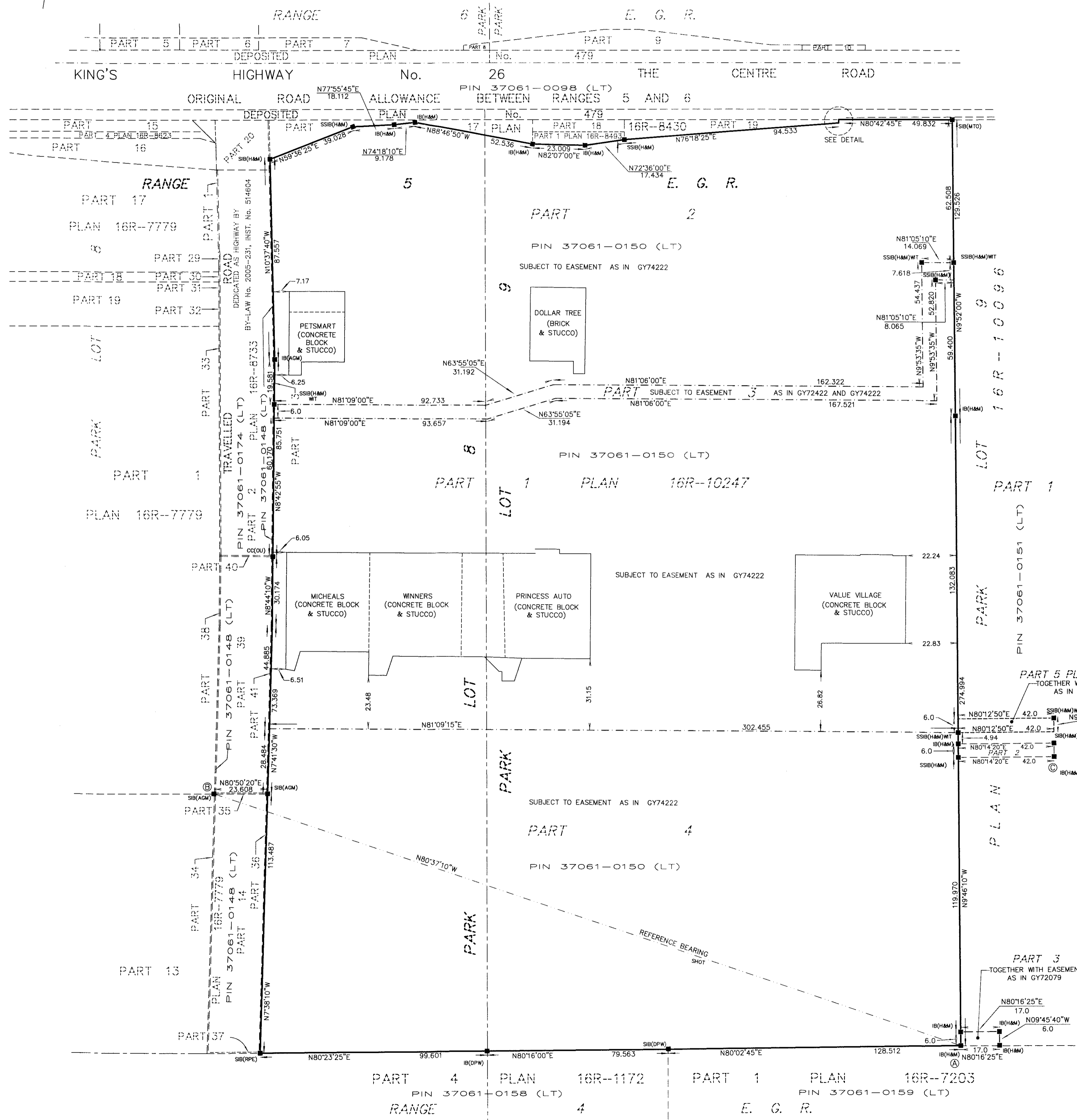
**ASSOCIATION OF ONTARIO LAND SURVEYORS**  
 PLAN SUBMISSION FORM  
**1964642**

THIS PLAN IS NOT VALID UNLESS IT IS AN EMBOSSED ORIGINAL COPY ISSUED BY THE SURVEYOR in accordance with Regulation 1026, Section 29(3).

**HEWETT AND MILNE LIMITED**  
 ONTARIO LAND SURVEYORS

302, 8th STREET EAST,  
 OWEN SOUND, ONTARIO  
 P. O. BOX 112, N4K 5P1  
 TEL. 519-376-5528  
 FAX 519-376-5534  
 EMAIL : handm@bmts.com

DRAWN BY	FILE #	FILE LOCATION
NCM	16-20	263-A



**METRIC NOTE**  
 DISTANCES AND COORDINATES SHOWN ON THIS PLAN ARE IN METRES AND CAN BE CONVERTED TO FEET BY DIVIDING BY 0.3048.