

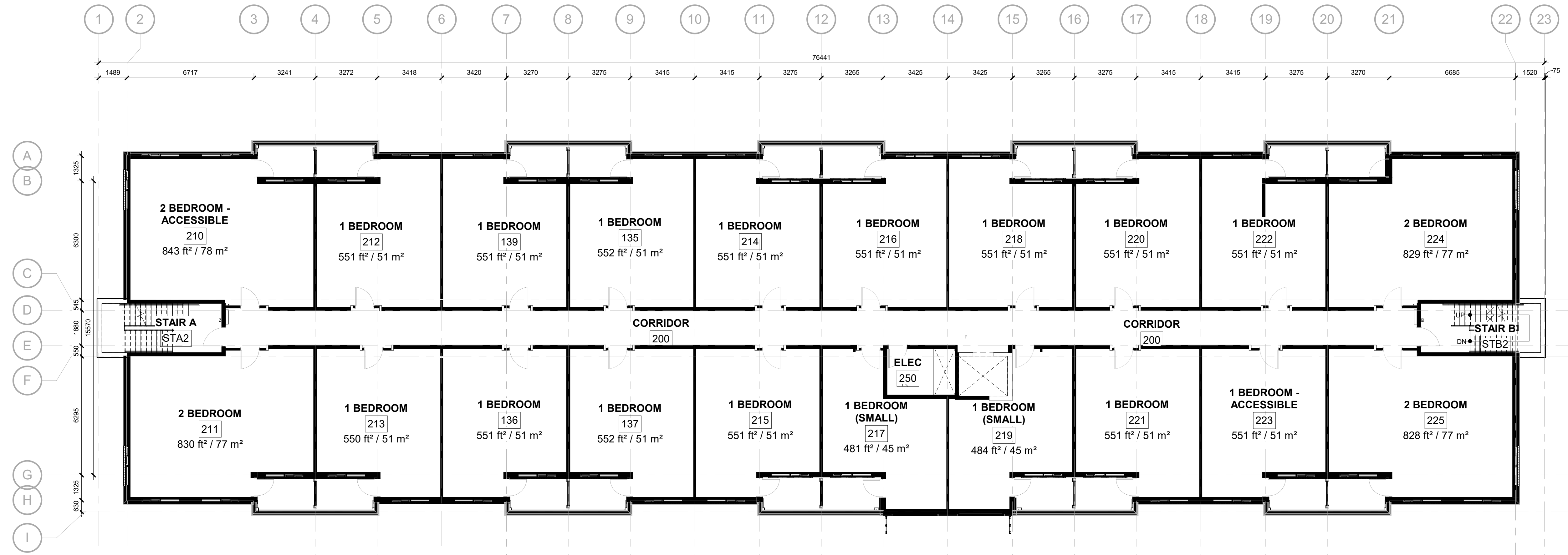
NO.	ISSUED	DATE
1	DRAFT PACKAGE	2023-01-19
2	CLIENT REVIEW	2023-01-31

DO NOT SCALE DRAWINGS. USE ONLY DRAWINGS MARKED "ISSUED FOR CONSTRUCTION". VERIFY CONFIGURATIONS AND DIMENSIONS ON SITE BEFORE BEGINNING WORK. NOTIFY ARCHITECT IMMEDIATELY OF ANY ERRORS, OMISSIONS OR DISCREPANCIES.

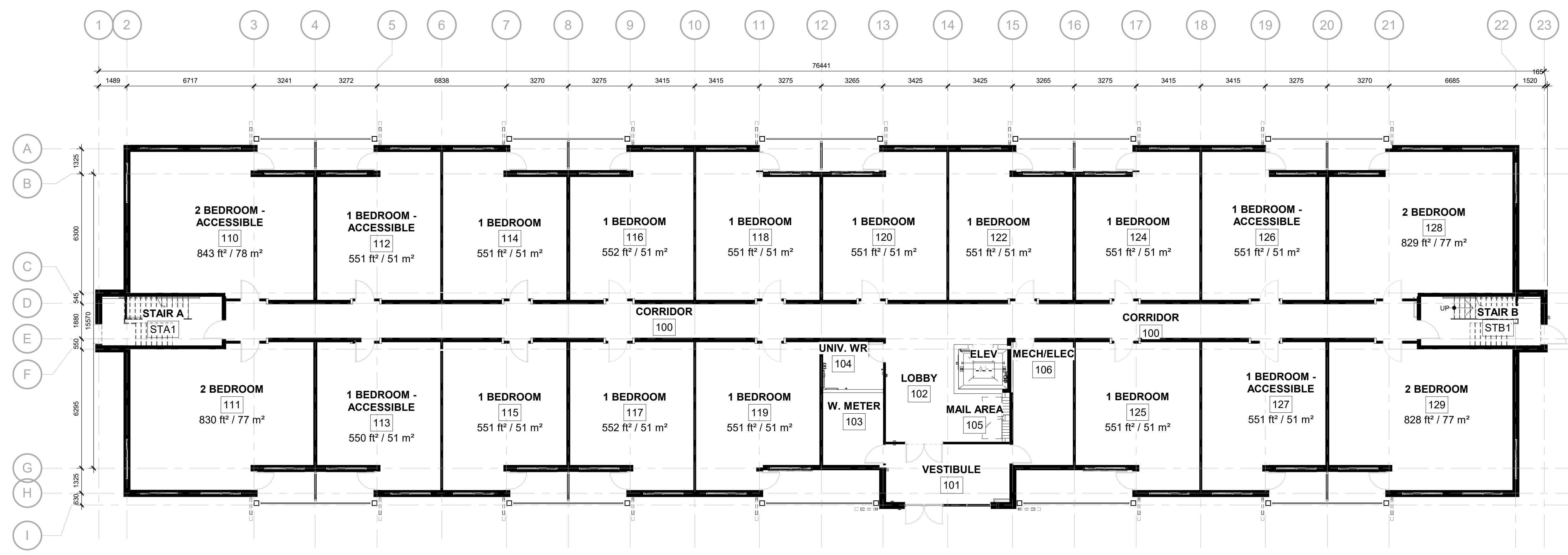
CHAMBERLAIN ARCHITECT SERVICES LIMITED AND CHAMBERLAIN CONSTRUCTION SERVICES LIMITED HAVE SIMILAR OWNERSHIP.

CHAMBERLAIN ARCHITECT SERVICES LIMITED HAS COPYRIGHT. CONSTRUCTING A SUBSTANTIALLY SIMILAR BUILDING WITHOUT PERMISSION MAY INFRINGE THE COPYRIGHT OWNERS RIGHTS. MAKING MINOR CHANGES TO PLANS DOES NOT NECESSARILY AVOID COPYRIGHT INFRINGEMENT. INNOCENT INFRINGEMENT IS NOT A DEFENSE TO COPYRIGHT INFRINGEMENT. ©

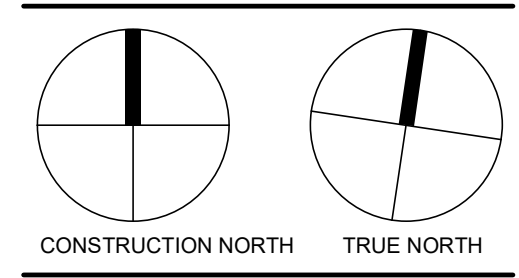
SEAL



2 TYPICAL FLOOR PLAN (2-4)
A111 1 : 125



1 GROUND FLOOR PLAN
A111 1 : 125



OWEN SOUND SMART CENTRES - APARTMENTS

10th STREET EAST & 18th AVENUE EAST
OWEN SOUND, ON

SHEET NAME

APARTMENT-FLOOR PLANS

START DATE	OCTOBER 2022
DRAWN BY	HK
CHECKED BY	CMC
SCALE	1 : 125
PROJECT NO.	122038
DRAWING	

A111

C:\Users\kserm\Documents\122038 - Owen Sound - APARTMENT BUILDING - R2022 (2022.11.16) - kserm\A2P.PLT

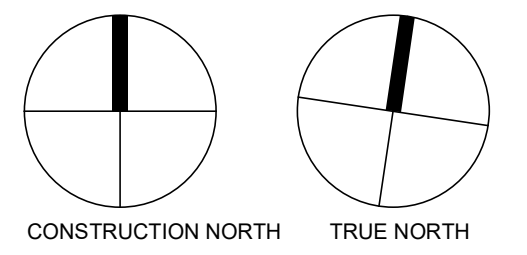
NO.	ISSUED	DATE
1	DRAFT PACKAGE	2023-01-19
2	CLIENT REVIEW	2023-01-31

DO NOT SCALE DRAWINGS. USE ONLY DRAWINGS MARKED "ISSUED FOR CONSTRUCTION". VERIFY CONFIGURATIONS AND DIMENSIONS ON SITE BEFORE BEGINNING WORK. NOTIFY ARCHITECT IMMEDIATELY OF ANY ERRORS, OMISSIONS OR DISCREPANCIES.

CHAMBERLAIN ARCHITECT SERVICES LIMITED AND CHAMBERLAIN CONSTRUCTION SERVICES LIMITED HAVE SIMILAR OWNERSHIP.

CHAMBERLAIN ARCHITECT SERVICES LIMITED HAS COPYRIGHT. CONSTRUCTING A SUBSTANTIALLY SIMILAR BUILDING WITHOUT PERMISSION MAY INFRINGE THE COPYRIGHT OWNERS RIGHTS. MAKING MINOR CHANGES TO PLANS DOES NOT NECESSARILY AVOID COPYRIGHT INFRINGEMENT. INNOCENT INFRINGEMENT IS NOT A DEFENSE TO COPYRIGHT INFRINGEMENT. ©

SEAL



**OWEN SOUND
SMART CENTRES -
APARTMENTS**

10th STREET EAST & 18th
AVENUE EAST
OWEN SOUND, ON

SHEET NAME

**APARTMENT-
ROOF PLAN**

START DATE **OCTOBER 2022**

DRAWN BY **HK**

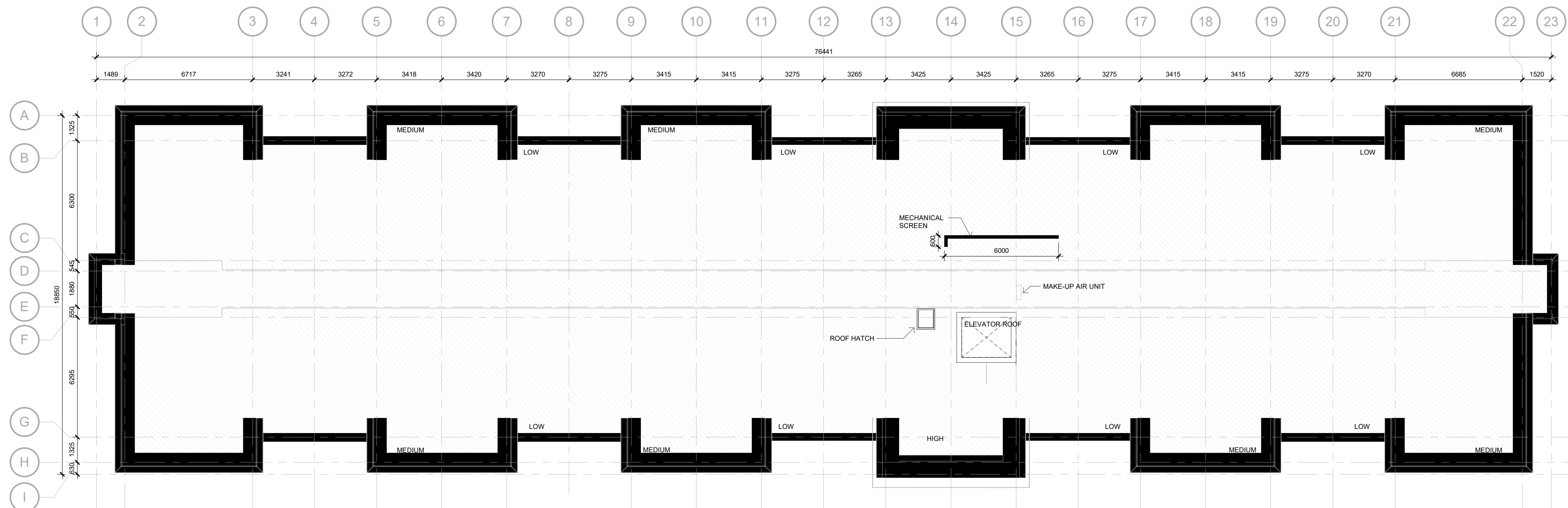
CHECKED BY **CMC**

SCALE **1 : 125**

PROJECT NO. **122038**

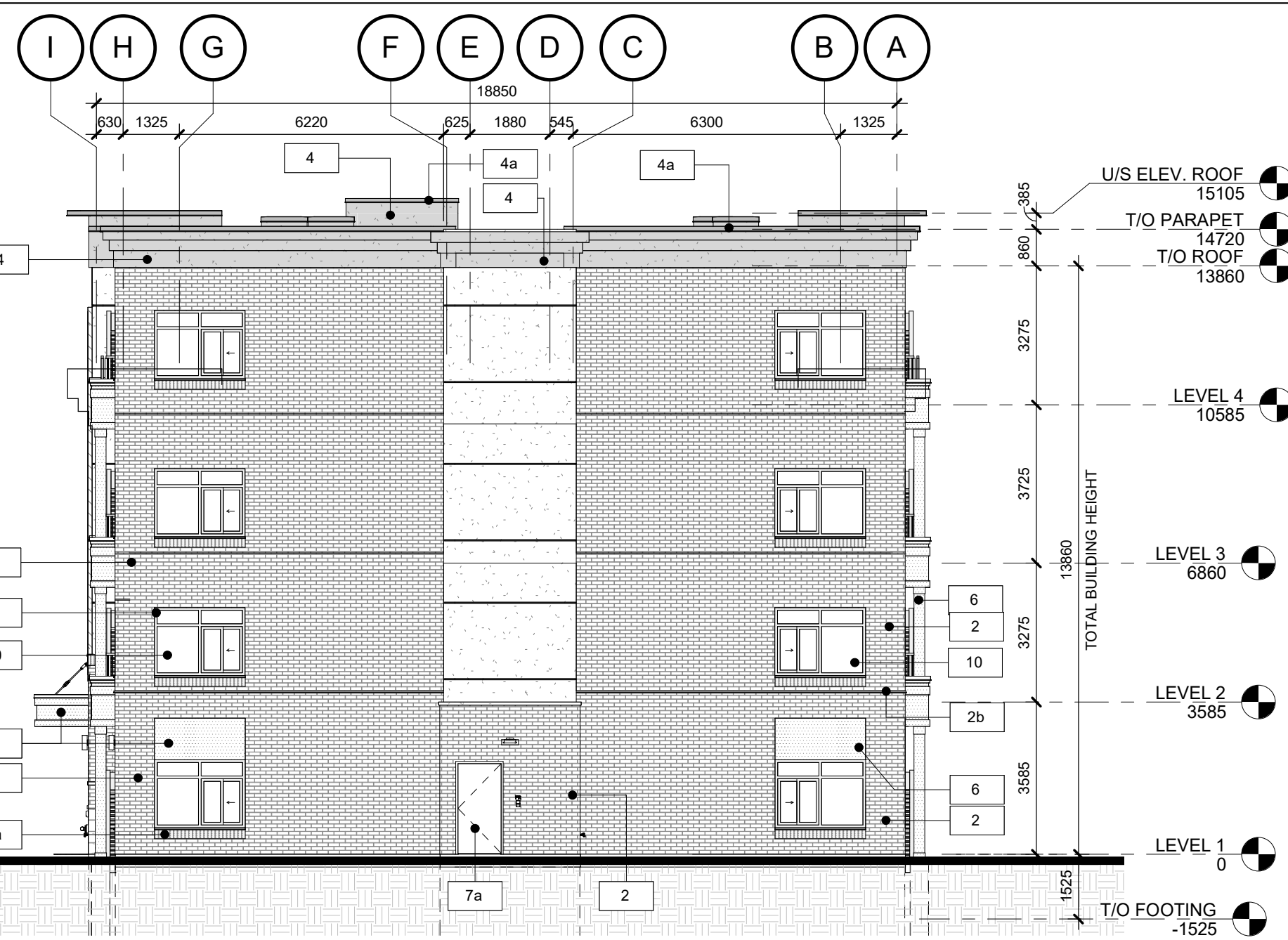
DRAWING

A112

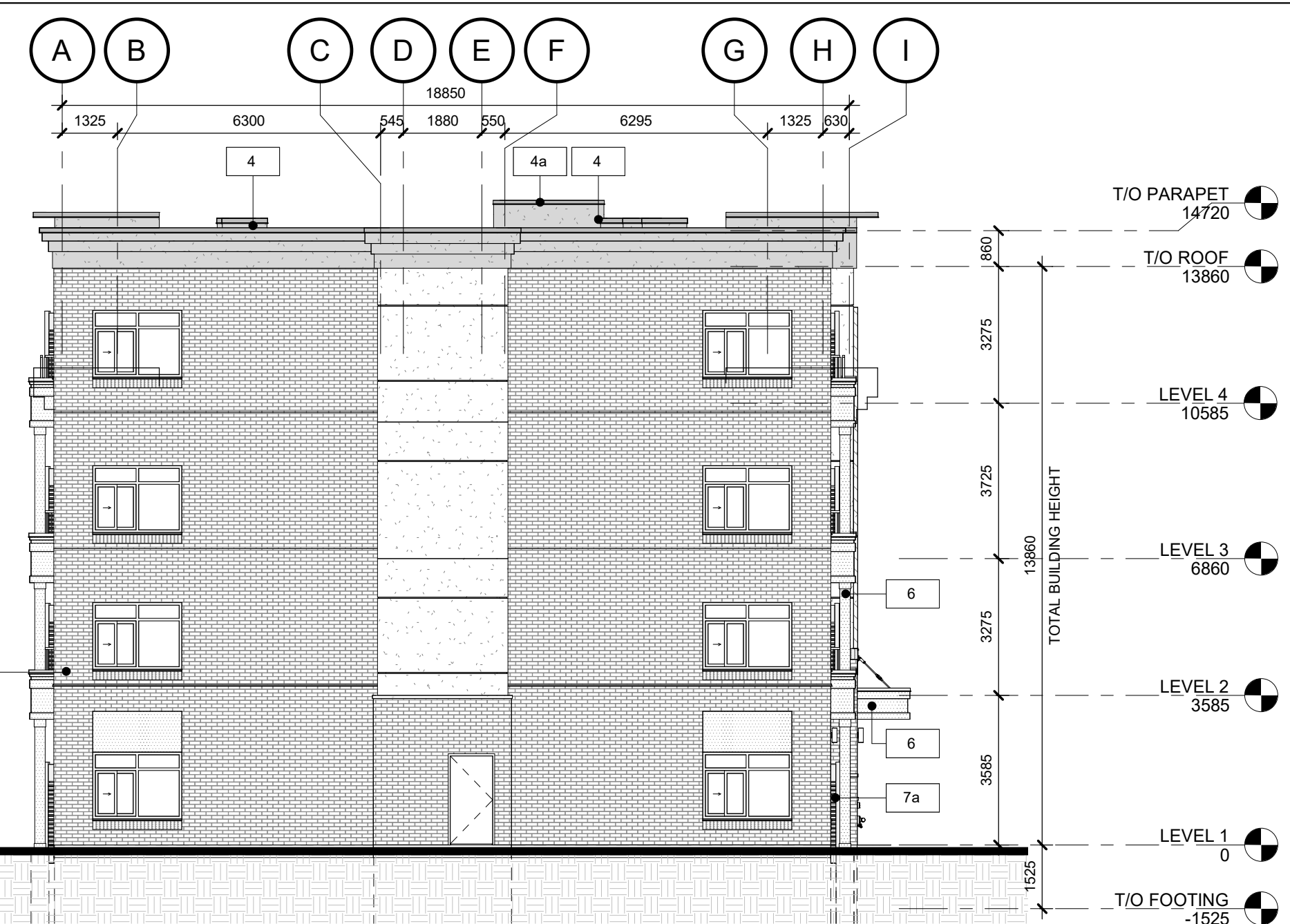


1 ROOF PLAN
A112 1 : 125

C:\Users\ksherm\Documents\122038 - Owen Sound - APARTMENT BUILDING - R2022 (2022.11.16) - ksherm\A112.rvt



4 RIGHT ELEVATION
A113 1:125



3 LEFT ELEVATION
A113 1:125

MATERIAL LEGEND

1	MASONRY - STONE
2	MASONRY - BRICK
2a	MASONRY - BRICK (SOLDIER COURSE)
2b	PREFINISHED METAL FLASHING, TO MATCH ADJACENT
3	EXTERIOR INSULATION FINISH SYSTEM (EIFS) - LIGHT
3a	EXTERIOR INSULATION FINISH SYSTEM (EIFS) TRIM - LIGHT
4	EXTERIOR INSULATION FINISH SYSTEM (EIFS) - DARK
4a	PREFINISHED METAL FLASHING, TO MATCH ADJACENT
5	PRECAST CONCRETE TRIM
6	CEMENT PANEL SIDING
6a	PREFINISHED METAL FLASHING, TO MATCH ADJACENT
7	THERMALLY BROKEN VINYL WINDOW TRIM
7a	PREFINISHED METAL, PAINTED TO MATCH WINDOW TRIM
8	COMPOSITE WOOD DECK
9	VENTED ALUMINUM SOFFIT
10	DOUBLE GLAZED PANEL. SEE WINDOW SCHEDULE & NOTES
11	GLAZED SPANDREL PANEL. SEE WINDOW SCHEDULE & NOTES

PRODUCT INFORMATION

- MASONRY - BRAMPTON BRICK - BONNEVILLE STONE - POLAR WHITE - 90 x 25 x 90 mm @ 1/2 STAGGER
- MASONRY - BRAMPTON BRICK - CONTEMPORARY SERIES - SAHARA 90 x 90 x 25, OR APPROVED EQUAL. TYPICAL LAYOUT IS 1/2 STAGGER. SOLDIER COURSE LAYOUT IS AS SHOWN
- EXTERIOR INSULATION FINISH SYSTEM (EIFS) - DRYVIT - PRAIRIE CLAY # 111 - SANDPEBBLE FINISH, OR APPROVED EQUAL
- EXTERIOR INSULATION FINISH SYSTEM (EIFS) - DRYVIT - STONE GRAY # 454A - SANDPEBBLE FINISH, OR APPROVED EQUAL
- PRECAST CONCRETE TRIM
- CEMENT PANEL SIDING - HARDIE BOARD SIDING - TIMBER BARK - 4/4 PANEL
- PREFINISHED WINDOW TRIM - BLACK ANODIZED. SEE SPECIFICATIONS.
- COMPOSITE WOOD DECK - TREX - TRANSCEND - TRI TORCH - 25 x 150 x, OR APPROVED EQUAL
- VENTED ALUMINUM SOFFIT - GENTEK - 3-PANEL 18" SOFFIT - BRIGHT WHITE, OR APPROVED EQUAL

Chamberlain Architects Constructors Managers

4671 Palladium Way (Unit 1)
Burlington, Ontario, L7M 0W9
CANADA

Phone: 905.631.7777
www.chamberlainIPD.com

NO	ISSUED	DATE
1	DRAFT PACKAGE	2023-01-19
2	CLIENT REVIEW	2023-01-31



2 REAR ELEVATION
A113 1:125



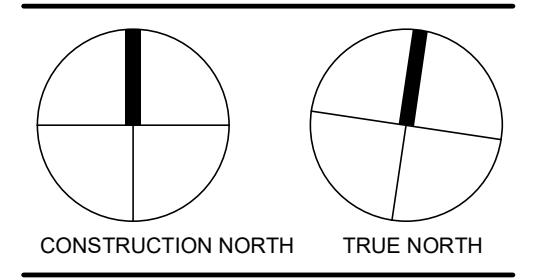
1 FRONT ELEVATION
A113 1:125

DO NOT SCALE DRAWINGS. USE ONLY DRAWINGS MARKED "ISSUED FOR CONSTRUCTION". VERIFY CONFIGURATIONS AND DIMENSIONS ON SITE BEFORE BEGINNING WORK. NOTIFY ARCHITECT IMMEDIATELY OF ANY ERRORS, OMISSIONS OR DISCREPANCIES.

CHAMBERLAIN ARCHITECT SERVICES LIMITED AND CHAMBERLAIN CONSTRUCTION SERVICES LIMITED HAVE SIMILAR OWNERSHIP.

CHAMBERLAIN ARCHITECT SERVICES LIMITED HAS COPYRIGHT. CONSTRUCTING A SUBSTANTIALLY SIMILAR BUILDING WITHOUT PERMISSION MAY INFRINGE THE COPYRIGHT OWNERS RIGHTS. MAKING MINOR CHANGES TO PLANS DOES NOT NECESSARILY AVOID COPYRIGHT INFRINGEMENT. INNOCENT INFRINGEMENT IS NOT A DEFENSE TO COPYRIGHT INFRINGEMENT. ©

SEAL



OWEN SOUND SMART CENTRES - APARTMENTS

10th STREET EAST & 18th AVENUE EAST
OWEN SOUND, ON

APARTMENT - EXT. ELEVATION

START DATE	OCTOBER 2022
DRAWN BY	HK
CHECKED BY	CMC
SCALE	As indicated
PROJECT NO.	122038

DRAWING

A113

C:\Users\hskerrin\Documents\122038 - Owen Sound - APARTMENT BUILDING - R0202 (2022.11.16) - hskerrin\A113.rvt