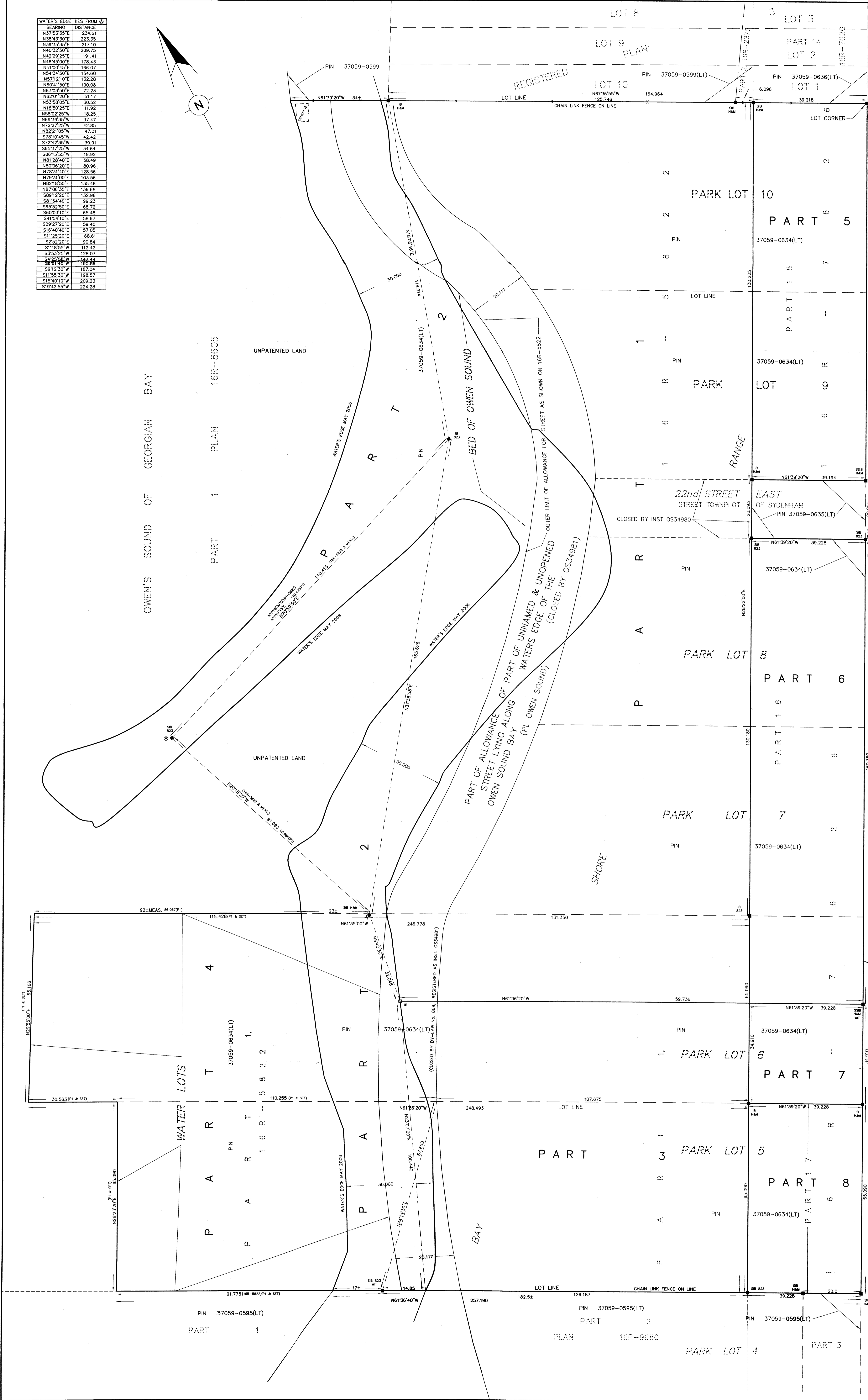
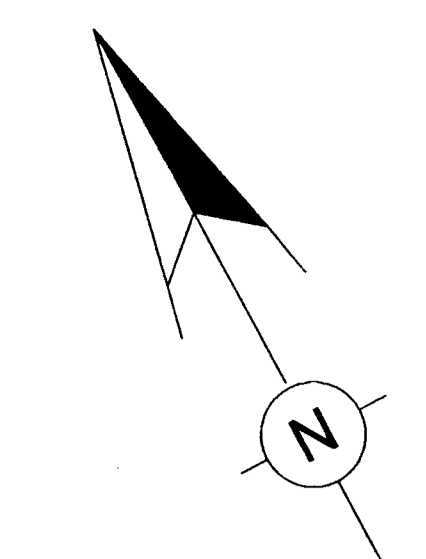


BEARING	DISTANCE
N37°53'35"E	234.61
N38°43'30"E	223.35
N39°33'35"E	217.10
N40°32'50"E	209.75
N42°28'25"E	191.41
N44°45'00"E	178.43
N51°00'45"E	166.07
N54°28'50"E	154.60
N57°12'10"E	132.28
N60°41'50"E	100.08
N63°03'50"E	72.23
N65°21'20"E	51.17
N53°58'05"E	30.52
N18°50'25"E	11.92
N58°02'25"W	18.25
N69°39'35"W	37.47
N72°27'25"W	42.85
N82°21'05"W	47.01
N78°10'45"W	42.42
S72°42'35"W	39.91
S65°12'25"W	34.64
S86°13'55"W	19.92
N81°28'40"E	38.49
N80°06'20"E	80.96
N78°31'40"E	128.56
N79°31'00"E	103.56
N82°18'50"E	135.46
N87°06'35"E	136.68
S89°12'20"E	132.96
S81°54'40"E	99.23
S65°52'50"E	68.72
S60°03'10"E	65.48
S47°54'10"E	58.67
S17°23'20"E	68.61
S25°22'00"E	90.84
S14°55'50"W	112.42
S35°32'50"W	126.07
S42°58'50"W	142.44
S51°48'50"W	185.89
S12°30'00"W	187.04
S11°58'30"W	198.57
S12°40'10"W	209.23
S19°42'55"W	224.28



I REQUIRE THIS PLAN TO BE DEPOSITED UNDER THE LAND TITLES ACT.

DATE: JULY 28th 2010

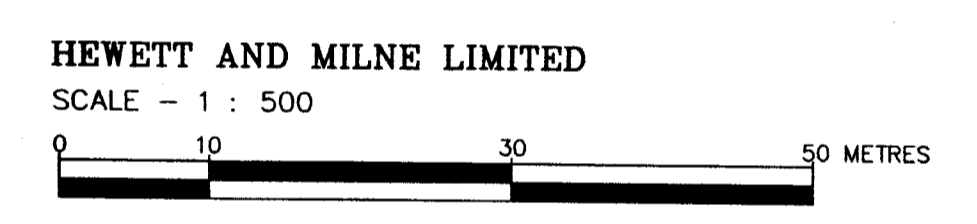
NEIL C. MILNE, O.L.S.

PLAN 16R-9907
RECEIVED AND REGISTERED
DATE: July 27th 2010
Russell Broy
Deputy Land Registrar for the City of Owen Sound
LAND TITLES DIVISION OF GREY (No.16)

PART	DESCRIPTION	PIN
1	PART OF PARK LOTS 6, 7, 8, 9 & 10 BAY SHORE RANGE, PART OF ALLOWANCE OF PART OF UNNAMED & UNOPENED STREET LYING ALONG WATERS EDGE OF THE OWEN SOUND BAY (PL OWEN SOUND) (CLOSED BY OS34981), PART OF ROAD ALLOWANCE OF PART OF AN UNNAMED STREET (PL OWEN SOUND) (CLOSED BY OS34980) NOW KNOWN AS 22ND STREET EAST BETWEEN PARK LOTS 8 & 9 BAYSHORE RANGE	PART OF 37059-0634(LT)
2	PART OF PARK LOT 8 BAY SHORE RANGE, PART OF ALLOWANCE OF PART OF UNNAMED & UNOPENED STREET LYING ALONG WATERS EDGE OF THE OWEN SOUND BAY (PL OWEN SOUND) (CLOSED BY OS34981), PART OF ROAD ALLOWANCE OF PART OF AN UNNAMED STREET (PL OWEN SOUND) (CLOSED BY OS34980) NOW KNOWN AS 22ND STREET EAST BETWEEN PARK LOTS 8 & 9 BAYSHORE RANGE, PART OF THE BED OF OWEN SOUND IN FRONT OF PARK LOTS 7 TO 10 (BOTH INCLUSIVE) BAYSHORE RANGE (PL OWEN SOUND), PART OF THE WATER LOTS IN FRONT OF PARK LOTS 5 & 6 BAYSHORE RANGE (PL OWEN SOUND)	PART OF 37059-0634(LT)
3	PART OF PARK LOTS 5 & 6 BAY SHORE RANGE, PART OF ALLOWANCE OF PART OF UNNAMED & UNOPENED STREET LYING ALONG WATERS EDGE OF THE OWEN SOUND BAY (PL OWEN SOUND) (CLOSED BY OS34981)	PART OF 37059-0634(LT)
4	PART OF THE WATER LOTS IN FRONT OF PARK LOTS 5 & 6 BAY SHORE RANGE	PART OF 37059-0634(LT)
5	PART OF PARK LOTS 9 & 10 BAY SHORE RANGE	PART OF 37059-0634(LT)
6	PART OF PARK LOTS 6, 7 & 8 BAY SHORE RANGE	37059-0634(LT)
7	PART OF PARK LOT 6 BAY SHORE RANGE	PART OF 37059-0634(LT)
8	PART OF PARK LOT 5 BAY SHORE RANGE	37059-0634(LT)

PARTS 5, 6, 7 & 8 SUBJECT TO EASEMENT AS IN GY26792
THIS PLAN IS COMPRISED OF ALL OF PIN 37059-0634(LT)

PLAN OF SURVEY OF ALL OF PARK LOTS 5 TO 10 (BOTH INCLUSIVE) BAY SHORE RANGE (PL OWEN SOUND) AND PART OF ALLOWANCE OF PART OF UNNAMED & UNOPENED STREET LYING ALONG WATERS EDGE OF THE OWEN SOUND BAY (PL OWEN SOUND) (CLOSED BY OS34981) AND PART OF ROAD ALLOWANCE OF part of AN UNNAMED STREET (PL OWEN SOUND) (CLOSED BY OS34980) NOW KNOWN AS 22ND STREET EAST BETWEEN PARK LOTS 8 & 9 BAYSHORE RANGE AND PART OF THE BED OF OWEN SOUND IN FRONT OF PARK LOTS 7 TO 10 (BOTH INCLUSIVE) BAY SHORE RANGE (PL OWEN SOUND) AND PART OF WATER LOTS IN FRONT OF PARK LOTS 5 & 6 BAY SHORE RANGE (PL OWEN SOUND) CITY OF OWEN SOUND COUNTY OF GREY



- LEGEND
- DENOTES SURVEY MONUMENT FOUND
 - DENOTES SURVEY MONUMENT SET
 - SB DENOTES STANDARD IRON BAR
 - SSB DENOTES SHORT STANDARD IRON BAR
 - DENOTES IRON BAR
 - HMM DENOTES HEWETT AND MILNE LTD., O.L.S.
 - PLAN 16R-9907
 - WT DENOTES WITNESS

NOTE
BEARINGS ARE ASTROMONIC, DERIVED FROM THE WESTERLY LIMIT OF BAY STREET SAID LIMIT SHOWN AS N28°22'00"E ON PLAN 16R-5822.

SURVEYOR'S CERTIFICATE
I CERTIFY THAT:
1. THIS SURVEY AND PLAN ARE CORRECT AND IN ACCORDANCE WITH THE SURVEY ACT, THE SURVEYORS ACT AND THE LAND TITLES ACT AND THE REGULATIONS MADE UNDER THEM.
2. THE SURVEY WAS COMPLETED ON THE 19th DAY OF JULY 2010.

JULY 20th 2010
Neil C. Milne
Ontario Land Surveyor

METRIC NOTE
DISTANCES SHOWN ON THIS PLAN ARE IN METRES AND CAN BE CONVERTED TO FEET BY DIVIDING BY 0.3048.

HEWETT AND MILNE LIMITED
ONTARIO LAND SURVEYORS

302, 8th STREET EAST,
OWEN SOUND, ONTARIO
P. O. BOX 112, N4K 5P1
TEL: 519-376-5528
FAX: 519-376-5534
EMAIL: handm@mts.com

DRAWN BY: FILE # FILE LOCATION
D.H. RUSSELL BROY/LANDTITLES