

216082
 Sydenham Heights Servicing
 City of Owen Sound



LEGEND

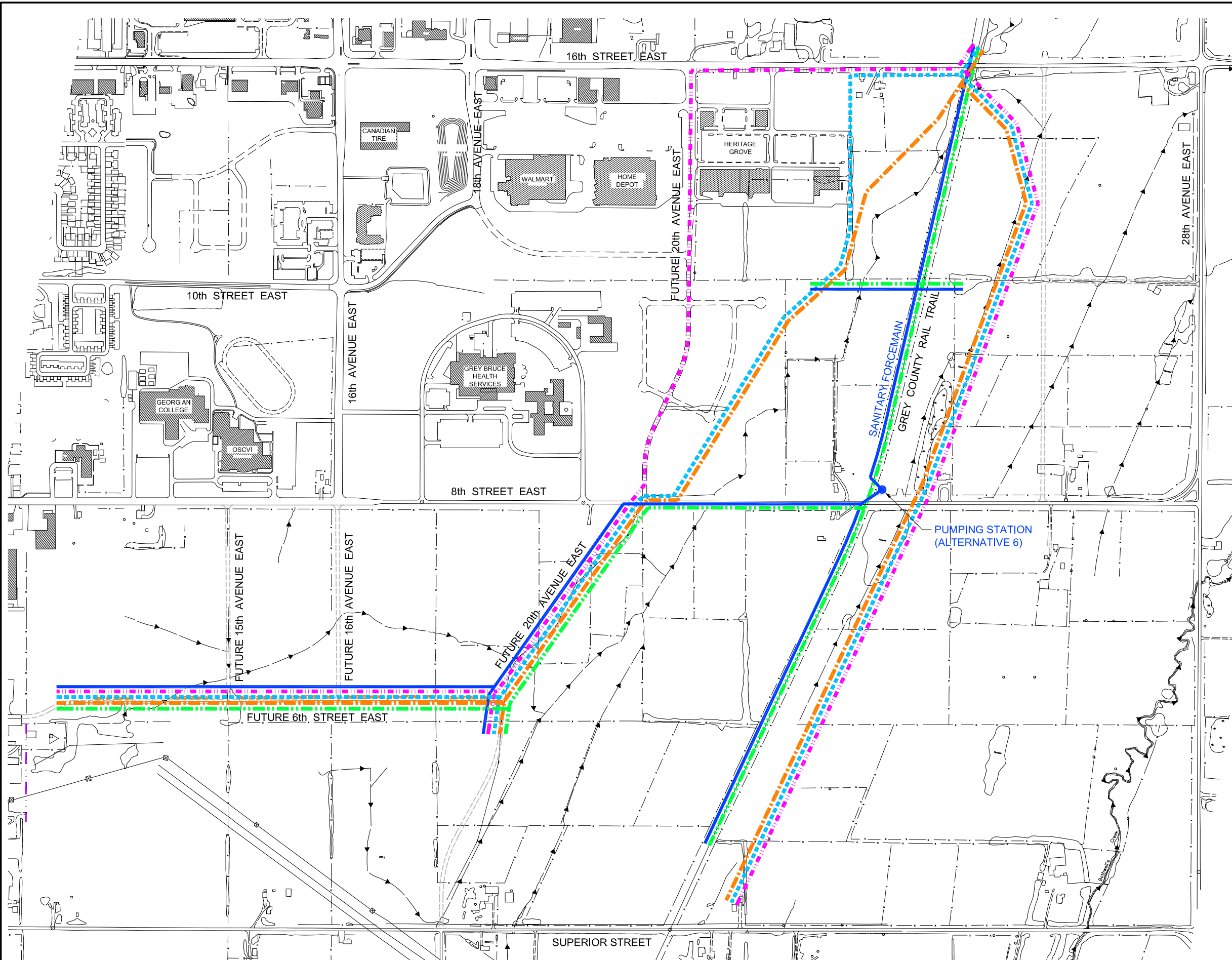
- - - - - ALTERNATIVE 2: WEST BRANCH ALONG TELFER CREEK, EAST BRANCH EAST OF RAIL TRAIL
- - - - - ALTERNATIVE 3: WEST BRANCH ACROSS DEVELOPMENT LANDS, EAST BRANCH EAST OF RAIL TRAIL
- - - - - ALTERNATIVE 4: WEST BRANCH ALONG 20th AVE EAST ALIGNMENT, EAST BRANCH EAST OF RAIL TRAIL
- - - - - ALTERNATIVE 5: SINGLE BRANCH ALONG RAIL TRAIL AND 8th ST EAST AND 20th AVENUE EAST ALIGNMENT
- - - - - ALTERNATIVE 6: WEST BRANCH ALONG 8th ST EAST AND 20th AVENUE EAST ALIGNMENT, EAST BRANCH ALONG RAIL TRAIL, PUMP STATION AND FORCEMAIN

SCALE = 1:7,500
 JULY 2016

SANITARY SERVICING
 SEWER ROUTE
 ALTERNATIVES

SYDENHAM HEIGHTS
 SANITARY SEWER
 ROUTE SELECTION

Figure No. 5



FILE:C:\Civil 3D Projects\216082 GP-K.dwg LAYOUT:Route Options-11x17
 LAST SAVED BY: kboers, 7/22/2016 2:44:15 PM PLOTTED BY: Ken Boers - GM BluePlan 7/22/2016 4:21:29 PM